

(CARPENTERS #2)

F

Eb Ab Eb Ab Eb Ab Eb Bb7



Eb Bb Ab Eb Gm



SUCH A FEEL - IN'S COM - IN' OV - ER ME. THERE IS WON - DER IN MOST

Fm Bb7 Eb Fm7Eb/G Ab Bb7



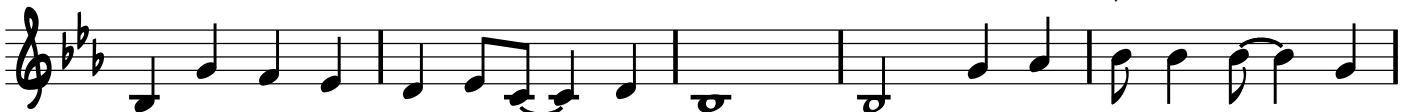
EV - 'RY - THING I SEE. NOT A CLOUD IN THE SKY GOT THE

Gm Ab C7 Fm7 Fm7(b5) Bbsus Bb



SUN IN MY EYES AND I WON'T BE SUR - PRISED IF IT'S A DREAM.

Eb Bb Ab Eb Gm



EV - 'RY - THING I WANT THE WORLD TO BE IS NOW COM - ING TRUE, ES -

Fm Bb7 Eb Fm7Eb/G Ab Bb7 Gm



PE - CIAL - LY FOR ME. AND THE REA - SON IS CLEAR, IT'S BE - CAUSE YOU ARE

C7 Fm7 F#7 Bb Ab/C Bb/D



HERE. YOU'RE THE NEAR - EST THING TO HEA - VEN THAT I'VE SEEN. I'M ON THE

Eb Ab/E Eb Ab Db/Ab Ab



TOP OF THE WORLD LOOK - IN DOWN ON CRE - A - TION AND THE

Eb Fm Ab/Bb Eb Fm7 Eb/G



ON - LY EX - PLA - NA - TION I CAN FIND IS THE

Ab Bb Eb Ab G° Fm

LOVE THAT I'VE FOUND, EV - ER SINCE YOU'VE BEEN A - ROUND. YOUR LOVE'S

Eb Ab Bb Fm Bb Eb

PUT ME AT THE TOP OF THE WORLD.

Ab/CBb/D **G** Eb Ab/E Eb Ab Db/Ab Ab

I'M ON THE TOP OF THE WORLD. LOOK-IN DOWN ON CRE-A - TION AND THE

I'M ON THE TOP LOOK-IN DOWN AND THE

Eb Fm Ab/Bb Eb Fm7Eb/G Ab Bb

ON-LY EX-PLA-NA - TION! CAN FIND IS THE LOVE THAT I'VE FOUND, EV-ER

Eb Ab G° Fm Eb Ab Eb Fm Eb/Bb Bb7 Eb

SINCE YOU'VE BEEN A - ROUND. YOUR LOVE'S PUT ME AT THE TOP OF THE WORLD.

G° Fm Eb Ab Eb Fm/Bb Bb7 Eb

YOUR LOVE'S PUT ME AT THE TOP OF THE WORLD.